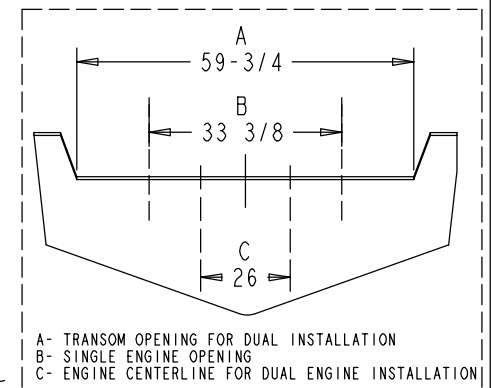
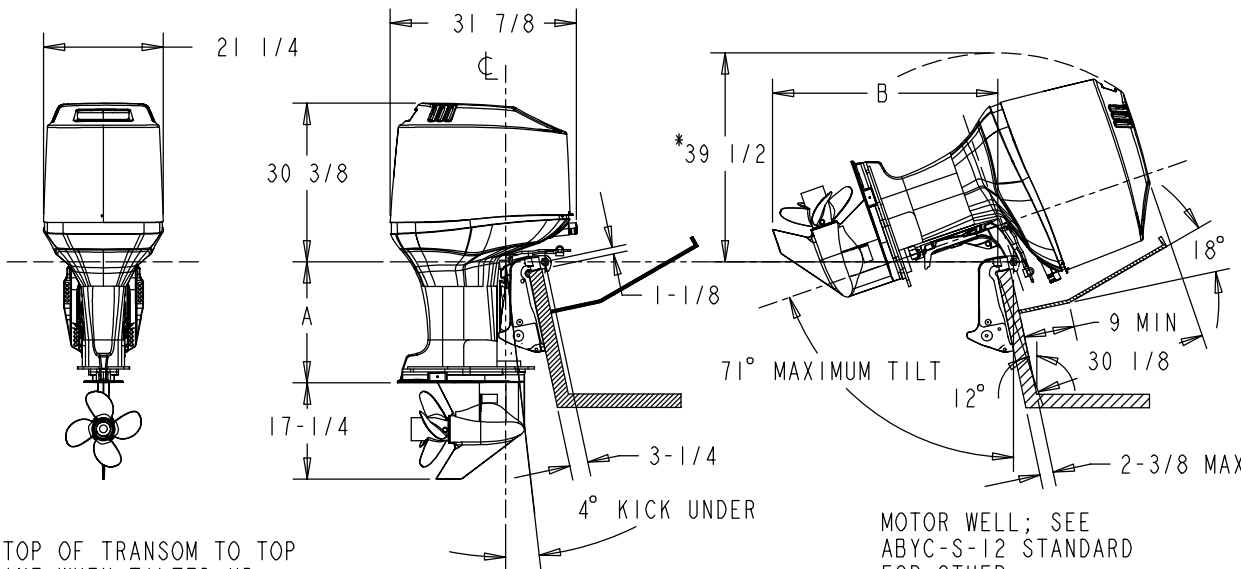
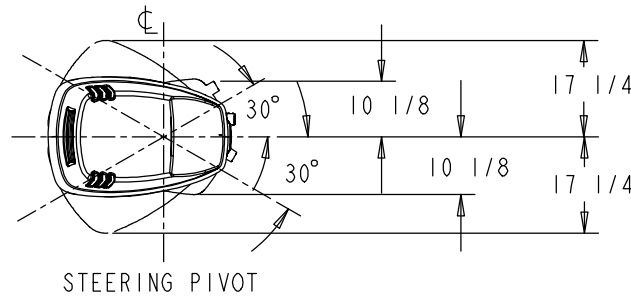
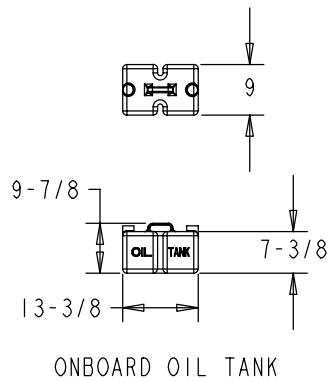


LET	REVISIONS	BY	DATE	ECN
-	DRAWING RELEASE	WAL	03-02-01	0545-01

MODEL EFI 225 - 250 HP
2002 AND NEWER

	LONG SHAFT 20"	EXTRA-LONG SHAFT 25"	EXTRA-EXTRA-LONG SHAFT 30"
A	20 1/4	25 1/4	30 1/4
B	39 3/4	44 1/2	48 1/2



MATERIAL
FINISH
REF SPECS

THE INFORMATION CONTAINED IN THIS DOCUMENT IS TO BE TREATED AS TRADE SECRET AND CONFIDENTIAL TO MERCURY

UNLESS OTHERWISE SPECIFIED		DIMENSIONS ARE AFTER PLATING
THIRD ANGLE PROJ	2 PL DEC ±	BREAK ALL SHARP EDGES
SCALE: 0.050	3 PL DEC ±	CHAM. TAPPED HOLES 90° X THD DIA
DO NOT SCALE	ANGLES ±	MACHINED SURFACES 1/32
		THREAD LENGTH = FULL THREADS
MANUF CAST	MATL ENG	
MANUF WACH / ASSY	PURCH	MERCURY
QC	PRODUCT LINE	TITLE
APPROVED	3.0L EFI	INSTALLATION DRAWING
CHECKED	DATE	3.0L EFI
	2-1-2001	PART NUMBER
	DESIGNED	90-815258-21
	SLK	SHEETS
		1 of 1

*FROM TOP OF TRANSOM TO TOP OF ENGINE WHEN TILTED UP.

TILT POSITION IS BASED ON A 12° TRANSOM ANGLE. A TRANSOM WITH AN ANGLE GREATER THAN 12° WILL REDUCE THE MAXIMUM TILT ANGLE AND INCREASE KICK UNDER ANGLE.