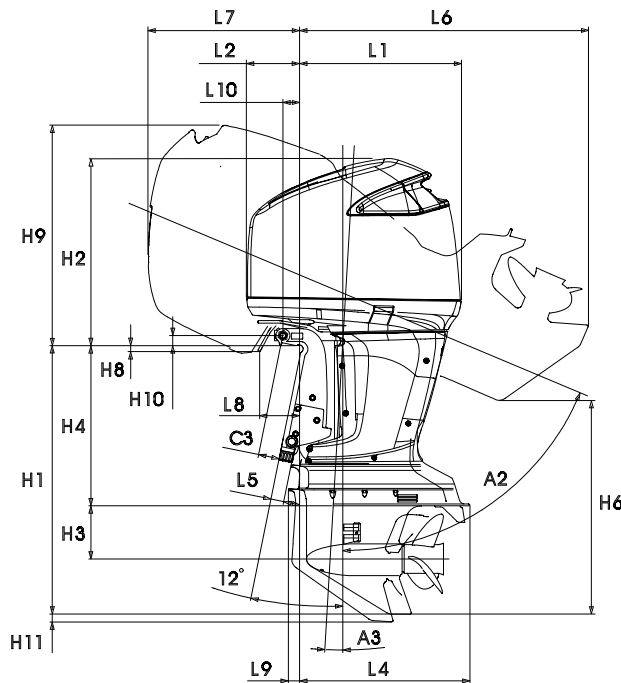
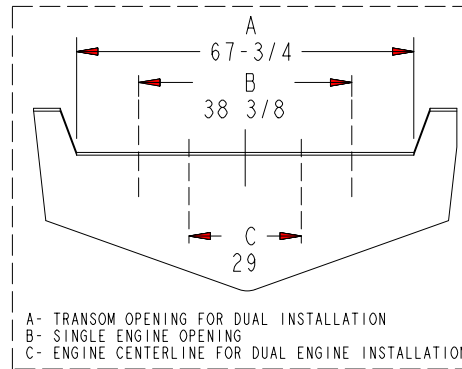
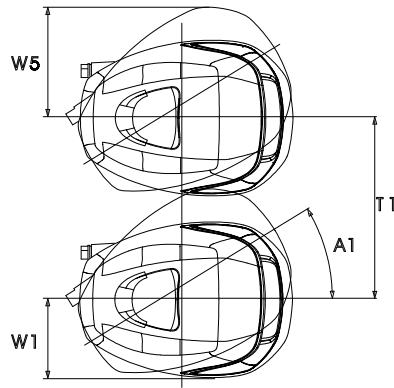


L1	25.6	
L2	8.6	
L4	26.5	
L5	2.3	
L6	45.5	XL
	50.1	XXL
L7	24.3	
L8	9.1	
L9	2.0	XL
	2.3	XXL
L10	3.0	
H1	42.4	XL
	47.4	XXL
H2	30.1	
H3	8.5	
H4	25.3	XL
	30.3	XXL
H6	33.3	XL
	36.4	XXL
H8	1.5	
H9	34.6	
H10	1.8	
H11	1.0	
W1	12.5	
W5	17.8	
A1	32°	
A2	70°	
A3	3°	
T1	29.0	
C3	3.1	



LET	REVISIONS	BY	DATE	ECN
-	DRAWING RELEASE	GLF	4-30-02	802
A	29.0 DUAL ENGINE SPACING WAS 28.5 ; 67 3/4 DUAL ENGINE TRANSM OPENING WAS 67 1/4	GLF	8-14-02	1447-02

SEE ABYC-S-12 STANDARD FOR MOTOR WELL DIMENSIONS.

TILT POSITION IS BASED ON A 12° TRANSM ANGLE. A TRANSM WITH AN ANGLE GREATER THAN 12° WILL REDUCE THE MAXIMUM TILT ANGLE AND INCREASE KICK UNDER ANGLE.

MATERIAL		
FINISH		
REF SPECS NOTED		
THE INFORMATION CONTAINED IN THIS DOCUMENT IS TO BE TREATED AS TRADE SECRET AND CONFIDENTIAL TO MERCURY		
UNLESS OTHERWISE SPECIFIED		
	TOLERANCE	DIMENSIONS ARE AFTER PLATING
THIRD ANGLE PROJ	2 PL DEC ±	BREAK ALL SHARP EDGES
SCALE: NONE	3 PL DEC ±	CHAM. TAPPED HOLES 90° X THD DIA
DO NOT SCALE	ANGLES ±	MACHINED SURFACES 12/3
MANUF CAST	MATL ENG	THREAD LENGTH = FULL THREADS
MANUF MACH / ASSY	PURCH	
QC	PRODUCT LINE F225	TITLE
APPROVED	DATE	INSTALLATION DRAWING F225
WJ	05-Apr-02	PART NUMBER
CHECKED	DESTINED	90-888853
GLF	GLF	SHEETS
		1 of 1

FORMAT B SIZE